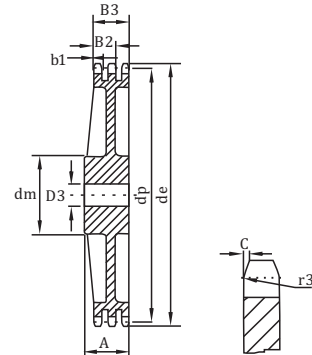
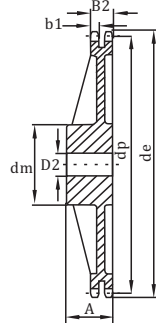
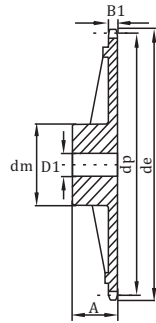


# Cast Iron Sprockets European Standard Series

Stock Bore For Chain Acc. to DIN 8187-ISO/R 606 Material:GG22-GG25



## 06B-1-2-3 SPROCKETS 3/8" × 7/32"

For Chain Acc. to DIN 8187

ISO/R 606

Z	d <sub>e</sub>	d <sub>p</sub>	SIMPLEX			DUPLEX			TRIPLEX		
			d <sub>m</sub>	D <sub>1</sub>	A	d <sub>m</sub>	D <sub>2</sub>	A	d <sub>m</sub>	D <sub>3</sub>	A
38	119.5	115.35	70	20	32	80	20	40	90	24	56
45	140.7	136.55	70	20	32	80	20	40	90	24	56
57	176.9	172.91	70	20	32	80	20	40	90	24	56
76	234.9	230.49	70	20	32	80	20	40	100	24	56
95	292.5	288.08	80	20	40	90	20	45	100	24	56
114	349.6	345.68	80	20	40	95	20	45	100	24	56
150	459.2	454.82	90	24	45	100	24	50	125	24	60

SPROCKETS	mm
Tooth radius r <sub>3</sub>	10
Radius width C	1
Tooth width B <sub>1</sub>	5.3
Tooth width b <sub>1</sub>	5.2
Tooth width B <sub>2</sub>	15.4
Tooth width B <sub>3</sub>	25.6
CHAIN	mm
Pitch	9.525
Internal width	5.72
Roller Φ	6.35

## 08B-1-2-3 SPROCKETS 1/2" × 5/16"

For Chain Acc. to DIN 8187

ISO/R 606

Z	d <sub>e</sub>	d <sub>p</sub>	SIMPLEX			DUPLEX			TRIPLEX		
			d <sub>m</sub>	D <sub>1</sub>	A	d <sub>m</sub>	D <sub>2</sub>	A	d <sub>m</sub>	D <sub>3</sub>	A
38	158.6	153.80	70	20	40	90	24	50	100	24	60
45	188.0	182.07	70	20	40	90	24	50	100	24	60
57	236.4	230.54	70	20	40	90	24	50	100	24	60
76	313.3	307.33	80	24	40	100	24	56	100	24	60
95	390.1	384.11	80	24	45	100	24	56	120	24	67
114	466.9	460.90	80	24	45	100	24	63	120	24	67

SPROCKETS	mm
Tooth radius r <sub>3</sub>	13
Radius width C	1.3
Tooth width B <sub>1</sub>	7.2
Tooth width b <sub>1</sub>	7
Tooth width B <sub>2</sub>	21
Tooth width B <sub>3</sub>	34.9
CHAIN	mm
Pitch	12.7
Internal width	7.75
Roller Φ	8.51

## 10B-1-2-3 SPROCKETS 5/8" × 3/8"

For Chain Acc. to DIN 8187

ISO/R 606

Z	d <sub>e</sub>	d <sub>p</sub>	SIMPLEX			DUPLEX			TRIPLEX		
			d <sub>m</sub>	D <sub>1</sub>	A	d <sub>m</sub>	D <sub>2</sub>	A	d <sub>m</sub>	D <sub>3</sub>	A
38	199.2	192.24	80	20	40	100	30	50	100	32	60
45	235.0	227.58	80	20	40	100	30	50	100	32	60
57	296.0	288.18	90	24	45	100	30	56	100	32	63
76	392.1	384.16	90	24	50	100	30	63	110	35	67
95	488.5	480.14	100	24	56	110	30	63	125	35	70
114	584.1	576.13	100	24	56	125	30	70	125	35	80

SPROCKETS	mm
Tooth radius r <sub>3</sub>	16
Radius width C	1.6
Tooth width B <sub>1</sub>	9.1
Tooth width b <sub>1</sub>	9
Tooth width B <sub>2</sub>	25.5
Tooth width B <sub>3</sub>	42.1
CHAIN	mm
Pitch	15.875
Internal width	9.65
Roller Φ	10.16

## 12B-1-2-3 SPROCKETS 3/4" × 7/16"

For Chain Acc. to DIN 8187

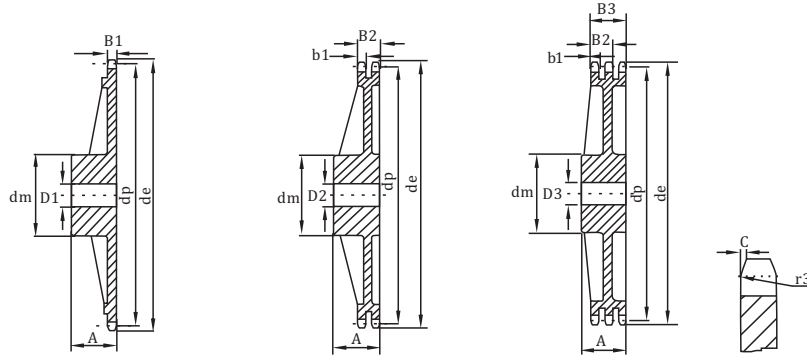
ISO/R 606

Z	d <sub>e</sub>	d <sub>p</sub>	SIMPLEX			DUPLEX			TRIPLEX		
			d <sub>m</sub>	D <sub>1</sub>	A	d <sub>m</sub>	D <sub>2</sub>	A	d <sub>m</sub>	D <sub>3</sub>	A
38	239.0	230.69	100	24	56	110	30	63	140	30	70
45	282.5	273.10	100	24	56	110	30	63	140	30	70
57	354.0	345.81	100	30	56	120	30	63	140	40	70
76	469.9	460.99	100	30	56	135	30	63	160	40	75
95	585.1	576.17	100	30	65	135	30	70	170	40	82
114	700.6	691.36	100	30	65	135	30	70	170	50	82

SPROCKETS	mm
Tooth radius r <sub>3</sub>	19
Radius width C	2
Tooth width B <sub>1</sub>	11.1
Tooth width b <sub>1</sub>	10.8
Tooth width B <sub>2</sub>	30.3
Tooth width B <sub>3</sub>	49.8
CHAIN	mm
Pitch	19.05
Internal width	11.68
Roller Φ	12.07

# Cast Iron Sprockets European Standard Series

Stock Bore For Chain Acc. to DIN 8187-ISO/R 606 Material:GG22-GG25



## 16B-1-2-3 SPROCKETS 1" × 17.02mm For Chain Acc. to DIN 8187 ISO/R 606

Z	d <sub>e</sub>	d <sub>p</sub>	SIMPLEX			DUPLEX			TRIPLEX		
			d <sub>m</sub>	D <sub>1</sub>	A	d <sub>m</sub>	D <sub>2</sub>	A	d <sub>m</sub>	D <sub>3</sub>	A
30	254.0	243.00	110	30	65	125	40	75	145	40	90
38	320.0	307.59	110	30	65	140	40	75	160	45	100
45	377.0	364.13	125	30	70	150	40	75	160	45	100
57	474.0	461.08	125	35	70	170	40	90	165	45	100
76	627.0	614.65	140	35	80	175	40	95	200	45	110
95	781.0	768.22	140	40	80	175	45	95	200	50	110
114	933.0	921.81	140	40	80	175	45	95	200	50	115

SPROCKETS		mm
Tooth radius r <sub>3</sub>		26
Radius width C		2.5
Tooth width B <sub>1</sub>		16.2
Tooth width b <sub>1</sub>		15.8
Tooth width B <sub>2</sub>		47.7
Tooth width B <sub>3</sub>		79.6
CHAIN		mm
Pitch		25.4
Internal width		17.02
Roller Φ		15.88

## 20B-1-2-3 SPROCKETS 1"1/4 × 3/4" For Chain Acc. to DIN 8187 ISO/R 606

Z	d <sub>e</sub>	d <sub>p</sub>	SIMPLEX			DUPLEX			TRIPLEX		
			d <sub>m</sub>	D <sub>1</sub>	A	d <sub>m</sub>	D <sub>2</sub>	A	d <sub>m</sub>	D <sub>3</sub>	A
30	318.9	303.75	115	35	70	130	40	80	160	50	100
38	399.6	384.49	125	35	70	140	45	90	180	56	110
45	470.3	455.17	125	35	70	140	45	90	180	56	110
57	591.5	576.36	135	40	80	160	50	100	180	60	125
76	783.5	768.32	140	40	90	180	50	100	200	60	140

SPROCKETS		mm
Tooth radius r <sub>3</sub>		32
Radius width C		3.5
Tooth width B <sub>1</sub>		18.5
Tooth width b <sub>1</sub>		18.2
Tooth width B <sub>2</sub>		54.6
Tooth width B <sub>3</sub>		91
CHAIN		mm
Pitch		31.75
Internal width		19.56
Roller Φ		19.05

## 24B-1-2-3 SPROCKETS 1"1/2 × 1" For Chain Acc. to DIN 8187 ISO/R 606

Z	d <sub>e</sub>	d <sub>p</sub>	SIMPLEX			DUPLEX			TRIPLEX		
			d <sub>m</sub>	D <sub>1</sub>	A	d <sub>m</sub>	D <sub>2</sub>	A	d <sub>m</sub>	D <sub>3</sub>	A
30	379.5	364.50	130	40	85	160	40	95	180	60	150
38	476.2	461.39	140	45	90	180	45	100	200	60	150
45	561.2	546.20	140	45	90	180	45	100	200	60	150
57	706.5	691.63	160	45	100	200	55	110	200	70	150
76	936.9	921.98	170	45	100	220	55	120	250	70	150

SPROCKETS		mm
Tooth radius r <sub>3</sub>		38
Radius width C		4
Tooth width B <sub>1</sub>		24.1
Tooth width b <sub>1</sub>		23.6
Tooth width B <sub>2</sub>		72
Tooth width B <sub>3</sub>		120.3
CHAIN		mm
Pitch		38.1
Internal width		25.4
Roller Φ		25.4